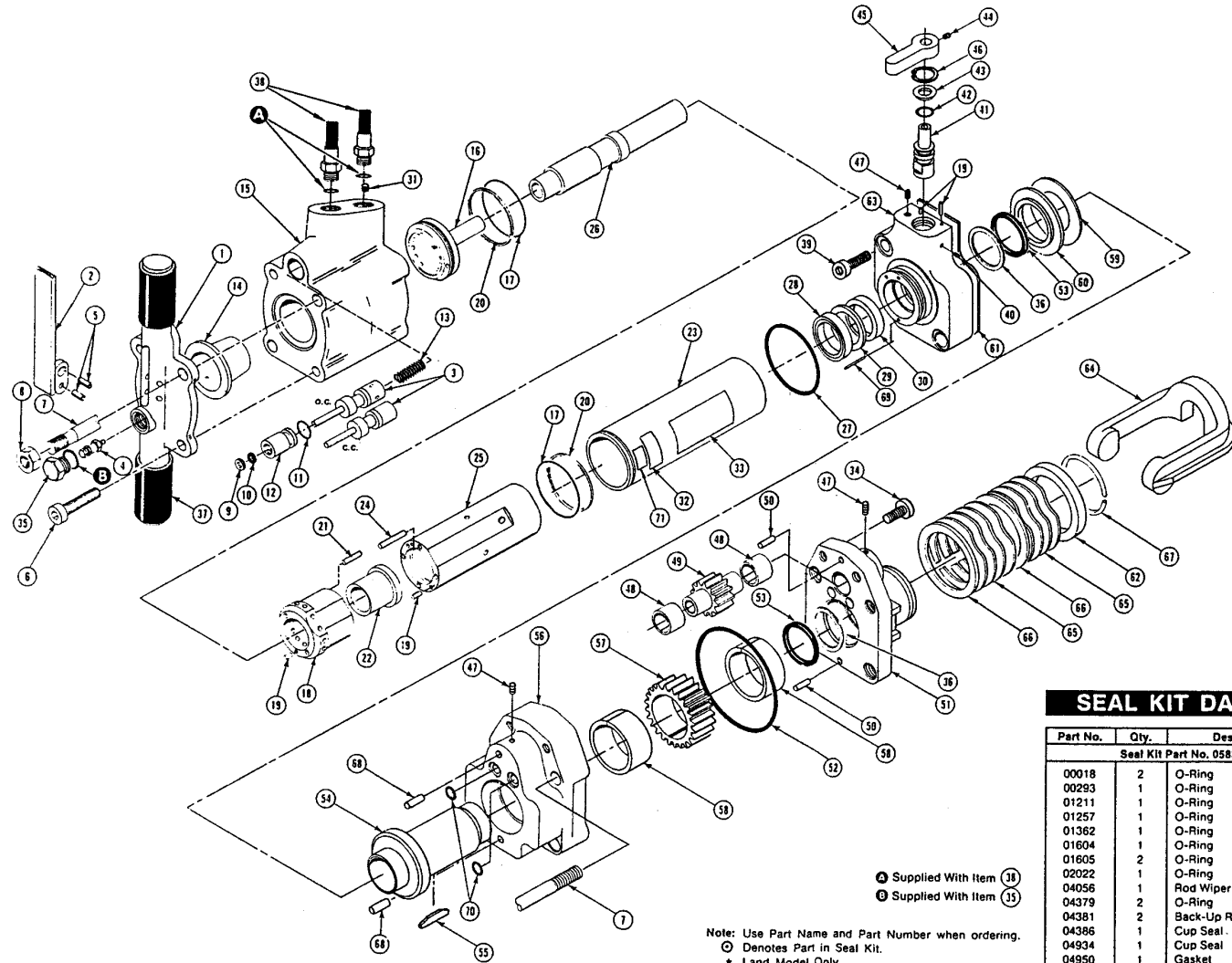


PARTS LIST



A Supplied With Item (38)
B Supplied With Item (35)

Note: Use Part Name and Part Number when ordering.
 O Denotes Part in Seal Kit.
 * Land Model Only.
 ** Underwater Model Only.

SEAL KIT DATA

Part No.	Qty.	Description
Seal Kit Part No. 05839		
00018	2	O-Ring
00293	1	O-Ring
01211	1	O-Ring
01257	1	O-Ring
01362	1	O-Ring
01604	1	O-Ring
01605	2	O-Ring
02022	1	O-Ring
04056	1	Rod Wiper
04379	2	O-Ring
04381	2	Back-Up Ring
04386	1	Cup Seal
04934	1	Cup Seal
04950	1	Gasket
11196	2	Quad Ring
11197	2	Back-Up Ring

Item No.	Part No.	Qty.	Description
1	04369	1	Handle
2	04371	1	Trigger
3	04077	1	Valve Spool, o.c.
4	04593	1	Valve Spool, c.c.
5	01650	1	Charging Valve
6	00844	2	Spirol Pin, 1/4 x 1/2
7	04372	2	Capscrew, 1/2-13 x 5 1/2 Hex Soc Hd
8	04832	2	Side Rod
9	04374	2	Locknut, 5/8-18
10	04056	1	Rod Wiper
11	01362	1	O-Ring, 5/16 x 7/16 x 1/16
12	00293	1	O-Ring, 11/16 x 7/8 x 3/32
13	04057	1	Bushing
14	04058	1	Spring
15	07479	1	Accumulator Diaphragm
16	05988	1	Accumulator - Valve Block Assy
17	04378	1	Porting Block
18	04379	2	O-Ring, 2 9/16 x 2 3/4 x 3/32
19	04380	1	Automatic Valve Body
20	02900	4	Roll Pin, 1/8 x 1/2
21	04381	2	Back-Up Ring, 2.581 x 2.753 x .053
22	04571	2	Push Pin, 3/16 x 1 1/4
23	04382	1	Automatic Valve
24	04383	1	Flow Sleeve Tube
25	04605	4	Push Pin, 1/4 x 1 1/2
26	04384	1	Flow Sleeve
27	04954	1	Piston
28	02022	1	O-Ring, 2 1/4 x 2 1/2 x 1/8
29	04386	1	Cup Seal
30	04780	1	Washer
31	04934	1	Cup Seal
32	05243	1	Orifice Plug
33	03786	1	GPM Sticker
34	05152	1	Stanley Sticker
35	00682	2	Capscrew, 3/8-16 x 1 3/4 Hex Soc Hd
36	07493	1	Charge Valve Cap
37	11197	2	Back-Up Ring
38	02494	2	Handle Grip
39	01652	2	Hose Assembly
40	04936	2	Capscrew, 1/2-13 x 4 1/2 Hex Soc Hd
41	00842	1	Set Screw, 10-24 x 5/16
42	04937	1	Motor Control Valve
43	01211	1	O-Ring, 5/8 x 3/4 x 1/16
44	04938	1	Washer
45	01607	1	Set Screw, 1/4-20 x 1/4
46	04939	1	Lever
47	04940	1	Retaining Ring, 13/16 Int.
48	00783	3	Pipe Plug, 1/16-27 NPT
49	03826	2	Bearing, 13 DU 12
50	04033	1	Idle Gear
51	00713	2	Dowel Pin, 1/4 x 1
52	04942	1	Motor Plate
53	01257	1	O-Ring, 3 1/2 x 3 5/8 x 1/16
54	11196	2	Quad Ring
55	04944	1	Drive Hex *
56	06578	1	Drive Hex **
57	04787	1	Key
58	05976	1	Motor Chamber
59	05975	1	Drive Gear
60	04947	2	Bearing, 28 DU 16
61	04948	1	Thrust Washer
62	04949	1	Thrust Back-Up Washer
63	04950	1	Gasket
64	04759	1	Spring Back-Up
65	04951	1	Drive Motor Control Block *
66	06800	1	Drive Motor Control Block **
67	04952	1	Latch
68	07063	8	Wave Spring
69	04756	2	Latch Washer
70	01749	2	Retaining Ring
71	01114	2	Roll Pin, 5/32 x 1/2
72	00114	1	Roll Pin, 5/32 x 1
73	00018	2	O-Ring, 7/16 x 9/16 x 1/16
74	03693	1	Closed Center Sticker (CC Model)