

**Easi-Ride™ Breaker Foot Assembly
 (Land Model Only)
 Patent Number 4614241**

NOTE When ordering replacement parts, use item numbers 43 through 54 for units equipped with Easi-Ride™ Breaker Foot Assembly.

- ⊙ Denotes part in Seal Kit.
- * Includes Wear Rings. (Not Sold Separately)
- ** Used on low - flow models only.

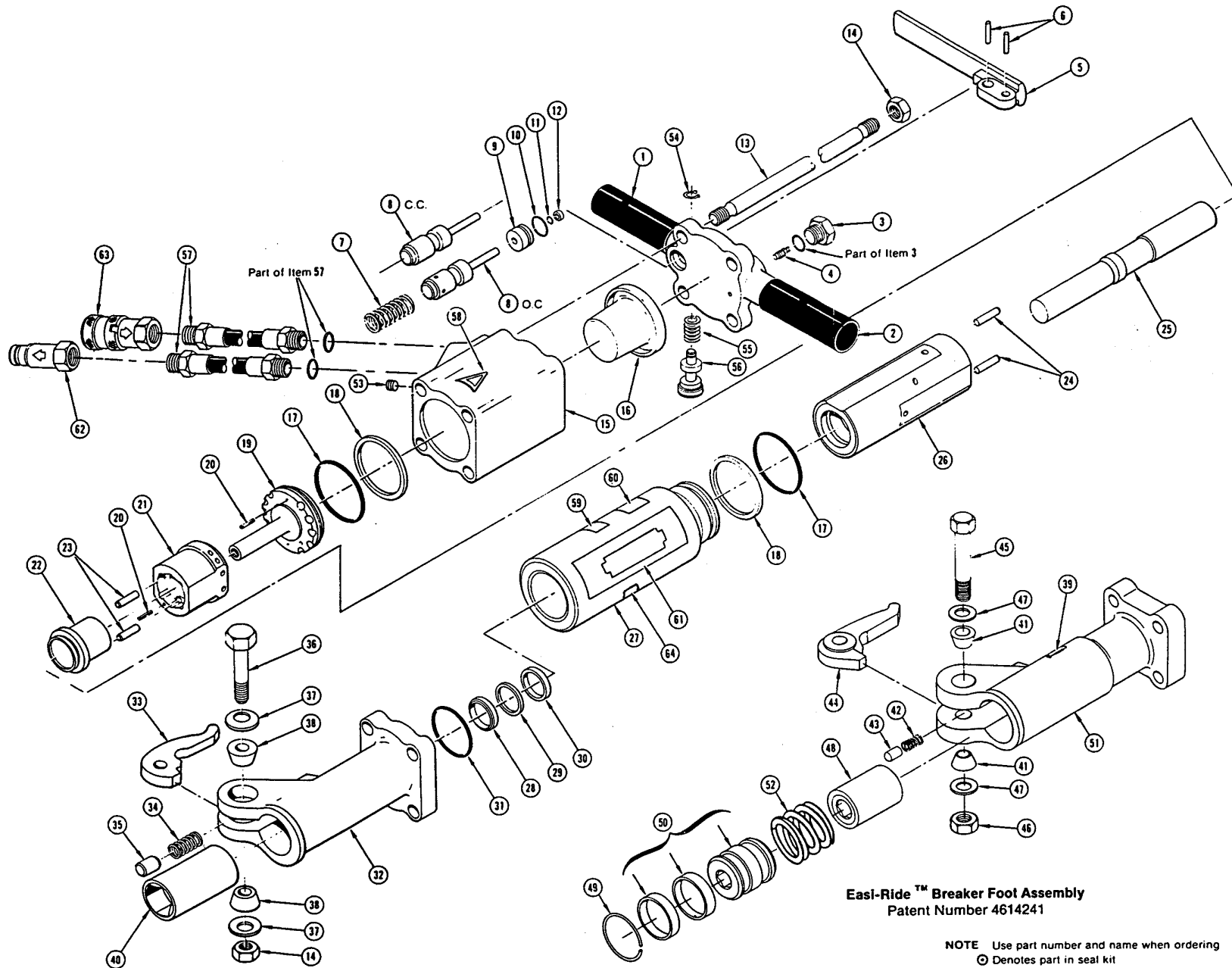
NOTE When ordering parts, use items 32 through 39 for units not equipped with Easi-Ride™ Breaker Foot Assembly.

SEAL KIT DATA

Part No.	Qty.	Description
Seal Kit Part No. 04595		
00293	1	O-Ring
01362	1	O-Ring
01604	1	O-Ring (For Item 3)
01605	2	O-Ring (For Item 40)
02022	1	O-Ring
04056	1	Rod Wiper
04379	2	O-Ring
04381	2	Back-Up Ring
04386	1	Cup Seal
04387	1	Rod Wiper

PARTS LIST

Item No.	Part No.	Qty.	Description
1	07483	1	Handle
2	02494	2	Handle Grip
3	07493	1	Cap Plug w/o O-Ring
4	01650	1	Charging Valve
5	04371	1	Trigger
6	07492	2	Spirol Pin 1/4 x 1-1/4
7	04058	1	Spring
8	04077	1	Valve Spool - Open Center
	04593	1	Valve Spool - Closed Center
	07699	1	Bushing Assy (Incl. Items 9 thru 12)
9	04057	1	Bushing
10	00293	1	O-Ring 11/16 x 7/8 x 3/32 ☉
11	01362	1	O-Ring 5/16 x 7/16 x 1/16 ☉
12	04056	1	Rod Wiper ☉
13	04373	4	Side Rod
14	04374	5	Lock Nut 5/8-18
15	07484	1	Accumulator Valve Block
16	07479	1	Accumulator Diaphragm
17	04379	2	O-Ring 2-9/16 x 2-3/4 x 3/32 ☉
18	04381	2	Back-Up Ring ☉
19	04378	1	Porting Block
20	02900	2	Roll Pin 1/8 x 1/2
21	07480	1	Automatic Valve Body
22	04382	1	Automatic Valve
23	04571	2	Push Pin
24	04605	4	Push Pin
25	07481	1	Piston
26	07485	1	Flow Sleeve
27	07478	1	Flow Sleeve Tube
	04383	1	Flow Sleeve Tube Easi-Ride Models
28	04387	1	Rod Wiper ☉
29	04780	1	Washer
30	04386	1	Cup Seal ☉
31	02022	1	O-Ring 2-1/4 x 2-1/2 x 1/8 ☉
	07489	1	Breaker Foot Assy 1-in. Hex (Incl. Item 32 thru 39 and 1 Item 14)
	07899	1	Breaker Foot Assy 7/8-in. Hex (Incl. Item 32 thru 39 and 1 Item 14)
	07510	1	Breaker Foot Assy 1in. Hex Flat Parallel to Latch Bolt (Incl. Item 32 thru 39 and 1 Item 14)
	07694	1	Breaker Foot Assy 7/8-in. Hex Flat Parallel to Latch Bolt (Incl. Item 32 thru 39 and 1 Item 14)
	08856	1	Breaker Foot Assy Underwater Model Only (Incl. Item 32 thru 39 and 1 Item 14)
32	07445	1	Breaker Foot
	08857	1	Breaker Foot (Underwater Model Only)
	07695	1	Breaker Foot
33	04394	1	Latch
34	04392	1	Spring
35	04393	1	Detent
36	04717	1	Latch Bolt
37	04716	2	Spring Washer
38	04715	2	Rubber Cone Washer
39	07477	1	Hex Bushing - 1-inch
	01742	1	Hex Bushing - 7/8-inch
40	01652	2	Pigtail Hose Assembly
41	03693	1	Closed Center Sticker (CC Model)
42	07487	1	Nameplate Sticker
	08154	1	Breaker Foot Assy - 1-1/8 Hex Easi-Ride™ (Incl. Item 43 thru 54)
	08081	1	Breaker Foot Assy - 1-1/4 Hex Easi-Ride™ (Incl. Item 43 thru 54)
43	01269	2	Rubber Sleeve
44	01744	1	Spring
45	08411	1	Detent
46	01837	1	Latch
47	04983	1	Latch Bolt
48	04984	1	Stop Nut
49	04985	2	Spring Washer
50	07517	1	Hex Bushing - 1-1/8
	07518	1	Hex Bushing - 1-1/4
51	07522	1	Retaining Ring
52	08115	1	Collar Support Assy - 1-1/8
	08116	1	Collar Support Assy - 1-1/4
53	12298	1	Breaker Foot / Insert Assy
54	08158	1	Spring
55	11587	1	Orifice Plug **
	15875	1	Tool Operator's Warning Tag (Not Illustrated)



SEAL KIT DATA**UK MODELS**

Part No.	Qty.	Description
Seal Kit Part No. 04595		
00293	1	O-Ring
01362	1	O-Ring
04056	1	Rod Wiper
04379	2	O-Ring
04381	2	Back-Up Ring
04387	1	Rod Wiper
04386	1	Cup Seal
02022	1	O-Ring
01605	2	O-Ring (for Item 41)
01604	1	O-Ring (For Item 3)

PARTS LIST

Item No.	Part No.	Qty.	Description
1	07975	1	Handle Assembly
2	02494	2	Handle Grip
3	07493	1	O-Ring Plug
4	01650	1	Charging Valve
5	04371	1	Trigger
6	07492	2	Spirol Pin 1/4 x 1-1/4
7	40458	1	Spring
8	04077	1	Valve Spool - Open Center
9	04057	1	Bushing
10	00293	1	O-Ring 11/16 x 7/8 x 3/32 ☉
11	01362	1	O-Ring 5/16 x 7/16 x 1/16 ☉
12	04056	1	Rod Wiper ☉
13	04373	4	Side Rod
14	04374	5	Lock Nut 5/8-11
15	07484	1	Accumulator Valve Block 30 lpm
	11588		Accumulator Valve Block 20 lpm
16	07479	1	Accumulator Diaphragm
17	04379	2	O-Ring 2-9/16 x 2-3/4 x 3/32 ☉
18	04381	2	Back-Up Ring ☉
19	04378	1	Porting Block
20	02900	2	Roll Pin 1/8 x 1/2
21	07480	1	Automatic Valve Body
22	04382	1	Automatic Valve
23	04571	2	Push Pin
24	04605	4	Push Pin
25	07481	1	Piston
26	07485	1	Flow Sleeve
27	07478	1	Flow Sleeve Tube
	04383	1	Flow Sleeve Tube Easi-Ride™ Models
28	04387	1	Rod Wiper ☉
29	04780	1	Washer
30	04386	1	Cup Seal ☉
31	02022	1	O-Ring 2-1/4 x 2-1/2 x 1/8 ☉
	07489	1	Breaker Foot Assy (incl. Item 32 thru 40)
	07510	1	Breaker Foot Assy Hex Flat Parallel to Latch Bolt (incl. Item 32 thru 40)
32	07445	1	Breaker Foot
33	04394	1	Latch
34	04392	1	Spring
35	04393	1	Detent
36	04717	1	Latch Bolt
37	04716	2	Spring Washer
38	04715	2	Rubber Cone Washer
39	11211	1	Sound Level Sticker
40	07477	1	Hex Bushing
	11637	1	Foot Assy - 1-1/4 x 6-1/4 Hex Easi-Ride™ Items 42-53
41	01269	2	Rubber Sleeve
42	01744	1	Spring
43	08411	1	Detent
44	01837	1	Latch
45	04983	1	Latch Bolt
46	04984	1	Stop Nut
47	04985	2	Spring Washer
48	07517	1	Hex Bushing - 1-1/4 x 6-1/4
49	07522	1	Retaining Ring
50	08115	1	Collar Support Assy - 1-1/4 x 6-1/4
51	08157	1	Breaker Foot
52	08158	1	Spring
53	11587	1	Orifice Plug (20 lpm only)
54	00224	1	Retaining Ring
55	07593	1	Spring
56	07594	1	Trigger Lock
57	01652	2	Pigtail Hose Assembly
58	11207	1	Sticker Circuit Type D
	11206		Sticker Circuit Type C (20 lpm)
59	03783	1	Sticker, Flow 3-9
	03781		Sticker, Flow (20 lpm) 3-5 gpm
60	11209	1	Sticker, Sound Power Level
61	07487	1	Name Tag
62	03973	1	Coupler Body, Male
63	03972	1	Coupler Body, Female
64	21913	1	Ear Defender Sticker