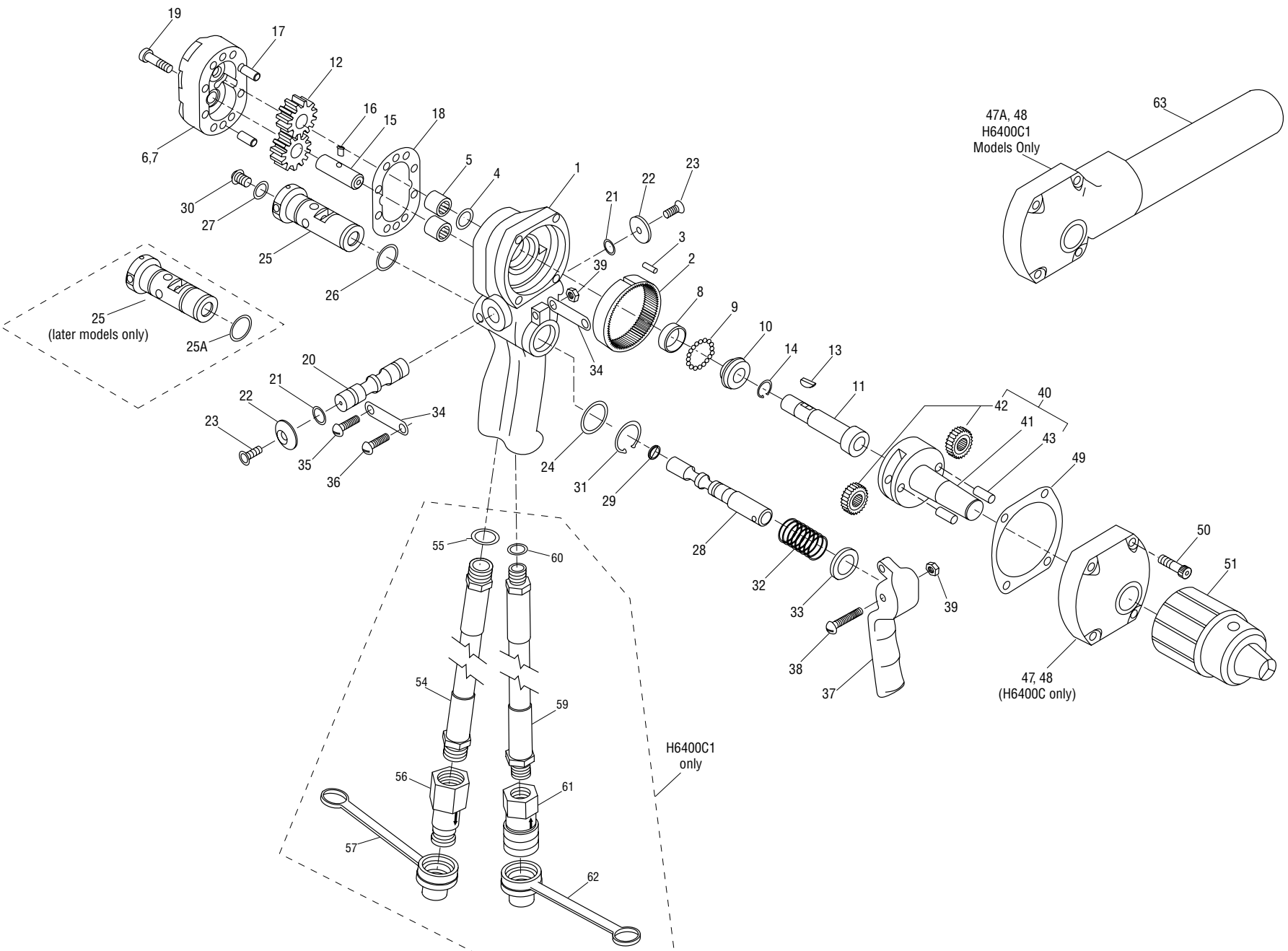


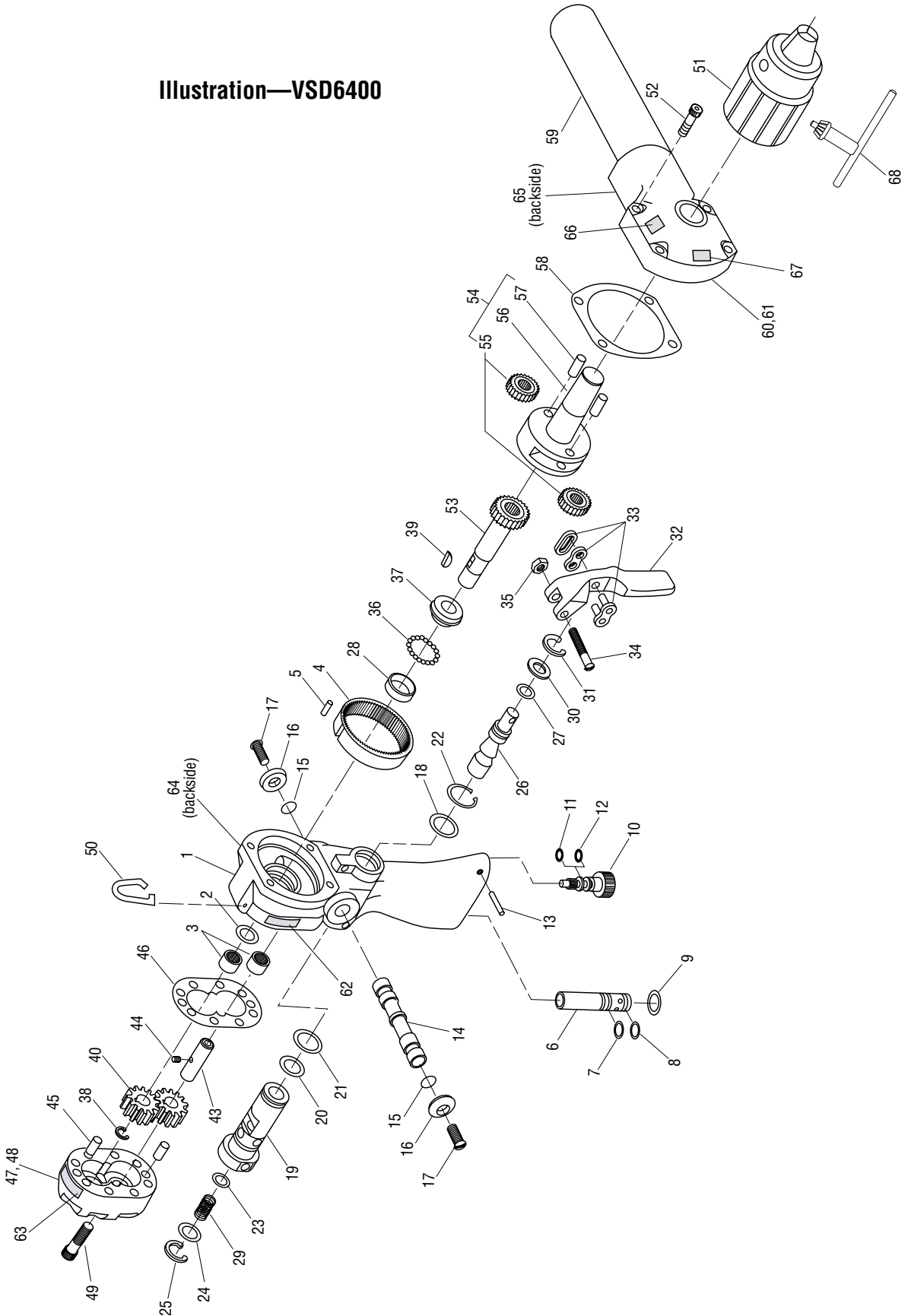
Illustration—H6400C and H6400C1



Parts List—H6400C and H6400C1

Key	UPC No. 78-3310-	Part No.	Description	Qty	Key	UPC No. 78-3310-	Part No.	Description	Qty
1	40584	128546	Handle, Insulated (includes items 2–5)	1	33	40462	122755	Washer, Flat, .580 x .937 x .050, Stainless Steel	1
2	40152	103130	Gear	1	34	40463	122756	Link	2
3	41809	F020886	Dowel Pin, .125 x .500	1	35	41293	F007788	Screw, Machine, #10–24 x .875, Round Head	1
4*	41503	F015305	O-ring, .500 x .687 x .093–80	1	36	41307	F009591	Screw, Machine, #10–24 x .750, Round Head	1
5	41591	F016728	Needle Bearing, .439 x .625 x .500	2	37	40458	122403	Trigger	1
6	40412	118070	Motor Cap (includes item 7)	1	38	41583	F016230	Screw, Machine, #10–24 x 1.25, Round Head	1
7	41591	F016728	Needle Bearing, .439 x .625 x .500	2	39	41676	F018029K	Nut, Hex, #10–24 x .187, Lock	3
8	40392	116575K1	Outer Race	1	40	40171	104172	Spindle Assembly (includes 41–43)	1
9	41723	F018865	Ball, .125 Diameter, Steel	18	41	40172	104173K	Frame, Planet Gear	1
10	40393	116576K1	Inner Race	1	42	40418	118586K	Gear, 21-Tooth (with Needle Bearing)	2
11	41222	156589	Drive Shaft with Gear	1	43	41624	F017014	Dowel Pin, .250 x .625	2
12	41630	F017105	Gear, 11-Tooth	2	47	40414	118099	Case Assembly, H6400C (includes item 48)	1
13	41592	F016729	Woodruff Key, #213	1	47A	43076	128990	Case Assembly, H6400C1 (includes item 48)	1
14	41621	F017010	Retaining Ring, .437, External	1	48	41476	F014753	Bearing, Bronze	1
15	40168	104110K	Shaft, Idler	1	49*	40134	101524	Gasket	1
16	41593	F016730	Drive Pin, .123 x .209 with Square Head	1	50	41616	F016807	Screw, Cap, 1/4–20 x 1.00, Socket Head	4
17	41624	F017014	Dowel Pin, .250 x .625	2	51	41453	F014048K	Chuck	1
18*	41595	F016732	Gasket, 2.09 x 3.09 x .0015	1	40812	132936	Hose Assembly, Tank (includes items 54–57)	1	
19	41616	F016807	Screw, Cap, 1/4–20 x 1.00, Socket Head	8	54	40307	112350	Hose, 3/8 x 12	1
20	40215	105427	Spool, Directional	1	55*	41397	F012813	O-ring, .644 x .818 x .087–90	1
21*	41489	F015257	O-ring, .437 x .562 x .062–68	2	56	41779	F020197K	Coupler, Male	1
22	40228	106576	Button	2	57	41834	F021406	Dust Cap	1
23	41715	F018627	Screw, Cap, #10–24 x .500, Flat Head	2	40813	132937	Hose Assembly, Pressure (includes items 59–62)	1	
24*	41559	F015679	O-ring, .875 x 1.000 x .062–70	1	59	40305	112348	Hose, 3/8 x 12	1
25	40585	128547	Sleeve, Super Spool (for serial numbers before 99273)	1	60*	41353	F011302	O-ring, .468 x .624 x .078–90	1
25	41188	154724	Sleeve, Super Spool (for serial numbers after 99273)	1	61	41777	F020195K	Coupler, Female	1
25A*	42089	F024419	O-ring, .787 x .889 x .051–70 (for serial numbers after 99273)	1	62	41834	F021406	Dust Cap	1
26*	41534	F015403	O-ring, .750 x .875 x .062–90	1	63	40465	122762	Auxiliary Handle (H6400C1 only)	1
27*	41371	F011762	O-ring, .437 x .625 x .093–90	1	*	40749	131394	Packing Kit (includes all items marked with an asterisk)	
28	40640	130741K	Super Spool	1					
29*	41585	F016327	O-ring, .312 x .437 x .062–70	1					
30	41814	F020928	Screw, Cap, 5/16–18 x .375, Button Head Socket	1					
31	41298	F009117	Retaining Ring, .875, External	1					
32	41760	F019817	Spring, Compression, .635 x .845 x 1.25	1					

Illustration—VSD6400



Parts List—VSD6400

Key	UPC No. 78-3310-	Part No.	Description	Qty	Key	UPC No. 78-3310-	Part No.	Description	Qty
	48759		HANDLE AND MOTOR ASSEMBLY	1	35	41676	F018029K	Hex Elastic Stop Nut, #10	1
1	43482	138339	HANDLE ASSEMBLY with ORIFICE, BEARINGS and GEAR	1	36	41723	F018865	Ball, .125 dia. Steel	18
2*	41503	F015305	O-ring, 1/2 x 3/32-90	1	37	40393	116576K1	Race, Inner	1
3	41591	F016728	Needle Bearing	2	38	41621	F017010	Retaining Clip, 25/64" External	1
4	40152	103130	Internal Gear	1	39	41592	F016729	Key, Woodruff #213	1
5	42092	F024482	Spiral Pin, 1/8 x 1/2	1	40	41630	F017105	Gear, 11 Tooth	2
6	43302	138338	FLOW CONTROL CARTRIDGE	1	43	40168	104110K	Shaft, Idler	1
7*	41491	F015261	O-ring, 1/2 x 1/16-70	1	44	41593	F016730	Pin, Drive	1
8*	41627	F017078	O-ring, 7/16 x 1/16 -70	1	45	41624	F017014	Dowel Pin, 1/4 dia. x 5/8	2
9	41600	F016737	Retaining Ring, 11/16 Internal	1	46*	41595	F016732	Gasket	1
10	41094	138311	Screw, Adjustable Torque Output	1	47	40412	118070	Cap, Motor	1
11*	42729	L080005	O-ring, 1/4 x 1/16-70	1	48	41591	F016728	Bearing, Needle	2
12*	41843	F021471	Back-up Ring	1	49	41616	F016807	Socket Head Cap Screw, 1/4-20 x 1	8
13*	42053	F023467	Spring Pin, 5/64 x 7/8	1	50	43817	F023463	Hook, Lift	1
14	40215	105427	Spool, Directional	1	51	41453	F014048K	Chuck	1
15*	41489	F015257	O-ring, 7/16 x 1/16-68	2	52	41616	F016807	Socket Head Cap Screw	4
16	40228	106576	Button	2	53	41222	156589	Shaft, Drive (w/gear)	1
17	41715	F018627	Flat Socket Head Cap Screw, #10 x 1/2	2	54	40171	104172	Assembly, Spindle	1
18*	41559	F015679	O-ring, 7/8 x 1/16-70	1	55	40418	118586K	Gear, 21 Tooth (w/bearing)	2
19	41097	138315	Sleeve, Super Spool	1	56	40172	104173K	Frame, Planet Gear	1
20*	42089	F024419	O-ring, .787 x .051-70	1	57	41624	F017014	Dowel Pin, 1/4 dia. x 5/8	2
21*	41534	F015403	O-ring, 3/4 x 1/16-90	1	58*	40134	101524	Gasket	1
22	41298	F009117	Retaining Ring, 7/8 External	1	59	40465	122762	Handle, Auxiliary	1
23*	41371	F011762	O-ring, 7/16 x 3/32-90	1	60	43076	128990	Assembly, Case	1
24	41095	138312	Cap	1	61	41476	F014753	Bearing, .752 I.D.	1
25	41712	F018511	Retaining Ring, 3/4 Internal	1	62*	49766	49766	Decal, Fairmont	1
26	48681	48681	Spool, Control	1	63*	49500	49500	Decal, Warning	1
27*	41585	F016327	O-ring, 5/16 x 1/16-70	1	64*	49764	49764	Decal, Pressure/Flow/Weight	1
29	42865	L089019	Spring, Compression	1	65*	49489	49489	Decal, Spool Rotation	1
30	41096	138313	Washer	1	66*	49506	49506	Decal, CE	1
31	41297	F008797	Retaining Ring, 5/8 Internal	1	67*	49592	49592	Decal, Sound	1
32	40406	118061	Trigger	1	68	41454	F014049K	Chuck Key	1
33	41636	F017345	Connecting Link	1					
34	41583	F016230	Slotted Round Head Machine Screw, #10 x 1-1/4	1	*	49765	49765	Seal Kit (includes all items marked with an asterik)	