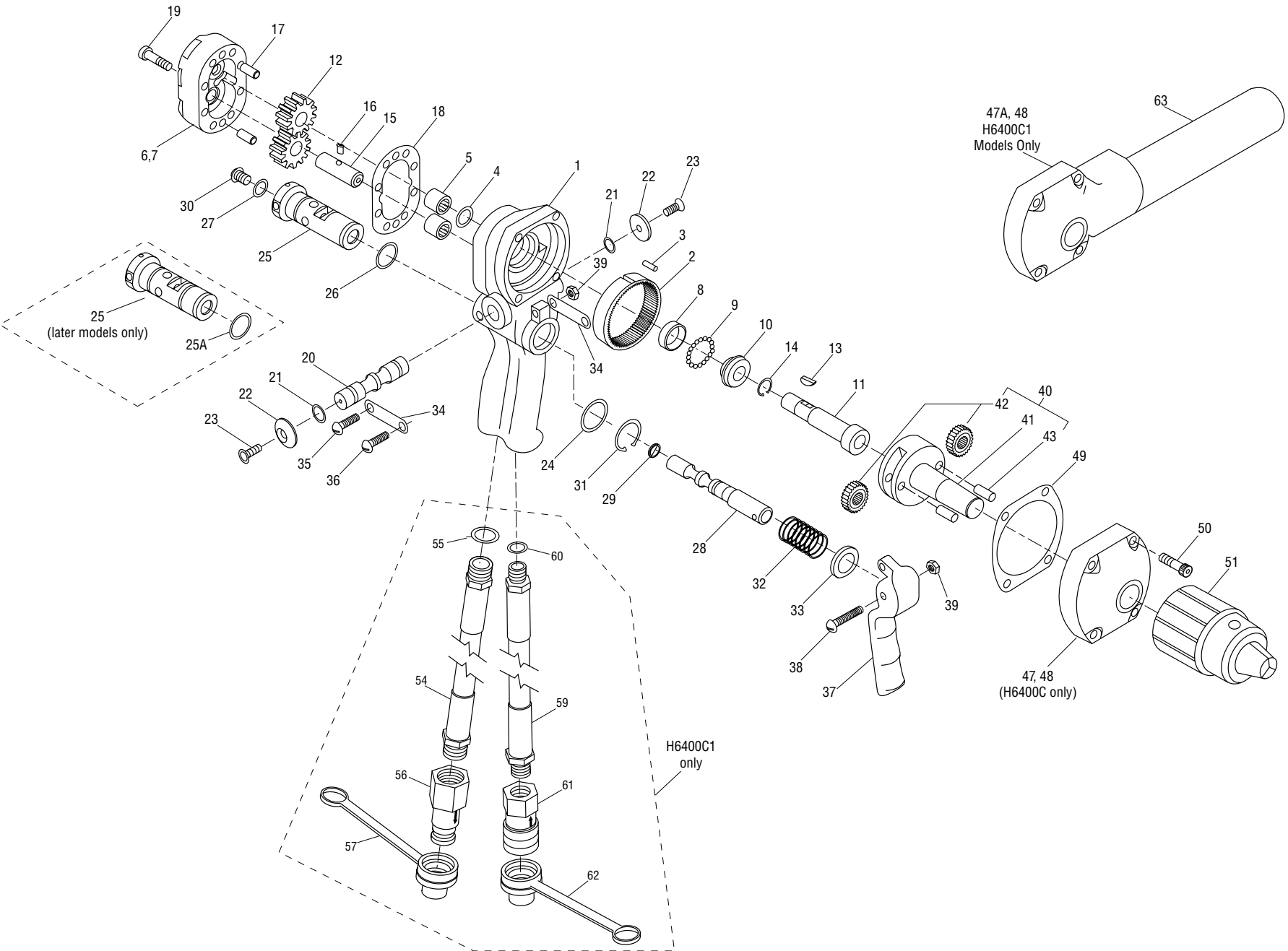


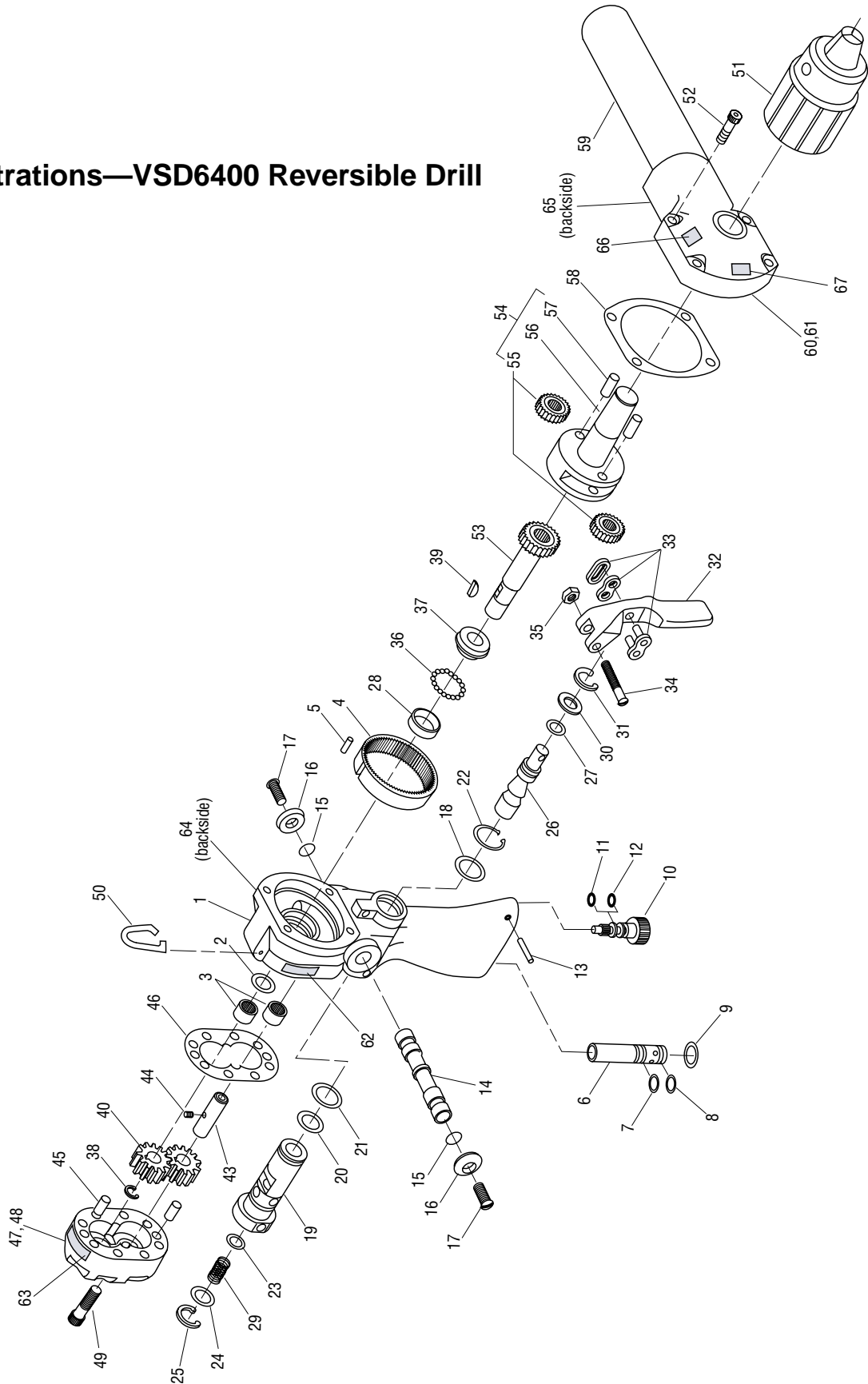
### Illustration—H6400C Reversible Drill



## Parts List—H6400C and H6400C1

Key	UPC No.	Part No. 78-3310	Description	Qty	Key	UPC No.	Part No. 78-3310	Description	Qty
1	40584	128546	Handle, Insulated (includes items 2 - 5).....	1	33	40462	122755	Washer, Flat, .580 x .937 x .050, Stainless Steel.....	1
2	40152	103130	Gear .....	1	34	40463	122756	Link .....	2
3	41809	F020886	Dowel Pin, .125 x .500".....	1	35	41293	F007788	Screw, Machine, #10 – 24 x .875", Round Head .....	1
4*	41503	F015305	O-ring, .500 x .687 x .093" – 80 .....	1	36	41307	F009591	Screw, Machine, #10 – 24 x .750", Round Head .....	1
5	41591	F016728	Needle Bearing, .439 x .625 x .500".....	2	37	40458	122403	Trigger .....	1
6	40412	118070	Motor Cap (includes item 7) .....	1	38	41583	F016230	Screw, Machine, #10 – 24 x 1.25", Round Head .....	1
7	41591	F016728	Needle Bearing, .439 x .625 x .500".....	2	39	41676	F018029K	Nut, Hex, #10 – 24 x .187, Lock .....	3
8	40392	116575K1	Outer Race .....	1	40	40171	104172	Spindle Assembly (includes 41 - 43).....	1
9	41723	F018865	Ball, .125" Diameter, Steel .....	18	41	40172	104173K	Frame, Planet Gear .....	1
10	40393	116576K1	Inner Race .....	1	42	40418	118586K	Gear, 21-Tooth (with Needle Bearing) .....	2
11	41222	156589	Drive Shaft with Gear .....	1	43	41624	F017014	Dowel Pin, .250 x .625".....	2
12	41630	F017105	Gear, 11-Tooth .....	2	47	40414	118099	Case Assembly, H6400C (includes item 48) .....	1
13	41592	F016729	Woodruff Key, #213 .....	1	47A	43076	128990	Case Assembly, H6400C1 (includes item 48) .....	1
14	41621	F017010	Retaining Ring, .437", External .....	1	48	41476	F014753	Bearing, Bronze .....	1
15	40168	104110K	Shaft, Idler .....	1	49*	40134	101524	Gasket .....	1
16	41593	F016730	Drive Pin, .123 x .209 with Square Head .....	1	50	41616	F016807	Screw, Cap, 1/4 – 20 x 1.00", Socket Head .....	4
17	41624	F017014	Dowel Pin, .250 x .625".....	2	51	41453	F014048K	Chuck .....	1
18*	41595	F016732	Gasket, 2.09 x 3.09 x .0015".....	1	40812	132936	Hose Assembly, Tank (includes items 54 - 57) .....	1	
19	41616	F016807	Screw, Cap, 1/4 – 20 x 1.00", Socket Head .	8	54	40307	112350	Hose, 3/8 x 12" .....	1
20	40215	105427	Spool, Directional .....	1	55*	41397	F012813	O-ring, .644 x .818 x .087" – 90 .....	1
21*	41489	F015257	O-ring, .437 x .562 x .062" – 68 .....	2	56	41779	F020197K	Coupler, Male .....	1
22	40228	106576	Button .....	2	57	41834	F021406	Dust Cap .....	1
23	41715	F018627	Screw, Cap, #10 – 24 x .500", Flat Head.....	2	40813	132937	Hose Assembly, Pressure (includes items 59 - 62) .....	1	
24*	41559	F015679	O-ring, .875 x 1.000 x .062" – 70 .....	1	59	40305	112348	Hose, 3/8 x 12" .....	1
25	40585	128547	Sleeve, Super Spool (for serial numbers before 99273) .....	1	60*	41353	F011302	O-ring, .468 x .624 x .078" – 90 .....	1
25	41188	154724	Sleeve, Super Spool (for serial numbers after 99273) .....	1	61	41777	F020195K	Coupler, Female .....	1
25A*	42089	F024419	O-ring, .787 x .889 x .051" – 70 (for serial numbers after 99273) .....	1	62	41834	F021406	Dust Cap .....	1
26*	41534	F015403	O-ring, .750 x .875 x .062" – 90 .....	1	63	40465	122762	Auxiliary Handle (H6400C1 only).....	1
27*	41371	F011762	O-ring, .437 x .625 x .093" – 90 .....	1	*	40749	131394	Packing Kit (includes all items marked with an asterisk*)	
28	40640	130741K	Super Spool .....	1					
29*	41585	F016327	O-ring, .312 x .437 x .062" – 70 .....	1					
30	41814	F020928	Screw, Cap, 5/16 – 18 x .375", Button Head Socket .....	1					
31	41298	F009117	Retaining Ring, .875, External .....	1					
32	41760	F019817	Spring, Compression, .635 x .845 x 1.25" ...	1					

### Illustrations—VSD6400 Reversible Drill



## Parts List—VSD6400

Key	UPC No.	Part No. 78-3310	Description	Qty	Key	UPC No.	Part No. 78-3310	Description	Qty
	48759		HANDLE AND MOTOR ASSEMBLY .....	1	35	41676	F018029K	Hex Elastic Stop Nut, #10 .....	1
1	43482	138339	HANDLE ASSEMBLY with ORIFICE, BEARINGS and GEAR .....	1	36	41723	F018865	Ball, .125 dia. Steel .....	18
2*	41503	F015305	O-ring, 1/2 x 3/32 – 90 .....	1	37	40393	116576K1	Race, Inner .....	1
3	41591	F016728	Needle Bearing .....	2	38	41621	F017010	Retaining Clip, 25/64" External .....	1
4	40152	103130	Internal Gear .....	1	39	41592	F016729	Key, Woodruff #213 .....	1
5	42092	F024482	Spiral Pin, 1/8 x 1/2 .....	1	40	41630	F017105	Gear, 11 Tooth .....	2
6	43302	138338	FLOW CONTROL CARTRIDGE .....	1	43	40168	104110K	Shaft, Idler .....	1
7*	41491	F015261	O-ring, 1/2 x 1/16 – 70 .....	1	44	41593	F016730	Pin, Drive .....	1
8*	41627	F017078	O-ring, 7/16 x 1/16 – 70 .....	1	45	41624	F017014	Dowel Pin, 1/4 dia. x 5/8 .....	2
9	41600	F016737	Retaining Ring, 11/16 Internal .....	1	46*	41595	F016732	Gasket .....	1
10	41094	138311	Screw, Adjustable Torque Output .....	1	47	40412	118070	Cap, Motor .....	1
11*	42729	L080005	O-ring, 1/4 x 1/16 – 70 .....	1	48	41591	F016728	Bearing, Needle .....	2
12*	41843	F021471	Backup Ring .....	1	49	41616	F016807	Socket Head Cap Screw, 1/4 – 20 x 1 .....	8
13*	42053	F023467	Spring Pin, 5/64 x 7/8 .....	1	50	43817	F023463	Hook, Lift .....	1
14	40215	105427	Spool, Directional .....	1	51	41453	F014048K	Chuck .....	1
15*	41489	F015257	O-ring, 7/16 x 1/16 – 68 .....	2	52	41616	F016807	Socket Head Cap Screw .....	4
16	40228	106576	Button .....	2	53	41222	156589	Shaft, Drive (w/gear) .....	1
17	41715	F018627	Flat Socket Head Cap Screw, #10 x 1/2 ...	2	54	40171	104172	Assembly, Spindle .....	1
18*	41559	F015679	O-ring, 7/8 x 1/16 – 70 .....	1	55	40418	118586K	Gear, 21 Tooth (w/bearing) .....	2
19	41097	138315	Sleeve, Super Spool .....	1	56	40172	104173K	Frame, Planet Gear .....	1
20*	42089	F024419	O-ring, .787 x .051 – 70 .....	1	57	41624	F017014	Dowel Pin, 1/4 dia. x 5/8 .....	2
21*	41534	F015403	O-ring, 3/4 x 1/16 – 90 .....	1	58*	40134	101524	Gasket .....	1
22	41298	F009117	Retaining Ring, 7/8 External .....	1	59	40465	122762	Handle, Auxiliary .....	1
23*	41371	F011762	O-ring, 7/16 x 3/32 – 90 .....	1	60	43076	128990	Assembly, Case .....	1
24	41095	138312	Cap .....	1	61	41476	F014753	Bearing, .752 I.D. .....	1
25	41712	F018511	Retaining Ring, 3/4 Internal .....	1	62*	49766	49766	Decal, Fairmont .....	1
26	48681	48681	Spool, Control .....	1	63*	49500	49500	Decal, Warning .....	1
27*	41585	F016327	O-ring, 5/16 x 1/16 – 70 .....	1	64*	49764	49764	Decal, Pressure/Flow/Weight .....	1
29	42865	L089019	Spring, Compression .....	1	65*	49489	49489	Decal, Spool Rotation .....	1
30	41096	138313	Washer .....	1	66*	49506	49506	Decal, CE .....	1
31	41297	F008797	Retaining Ring, 5/8 Internal .....	1	67*	49592	49592	Decal, Sound .....	1
32	40406	118061	Trigger .....	1	*	49765	49765	Seal Kit (includes all items marked with an asterisk*)	
33	41636	F017345	Connecting Link .....	1					
34	41583	F016230	Slotted Round Head Machine Screw, #10 x 1-1/4 .....	1					